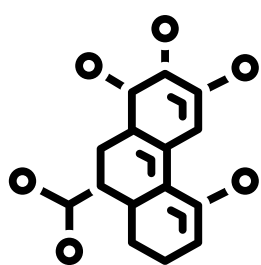


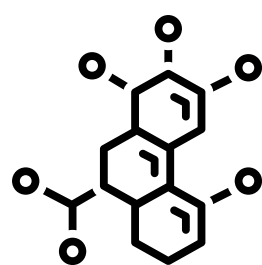
PROFOUND TRIAL

OLAPARIB & METASTATIC CASTRATION-RESISTANT PROSTATE CANCER (MCRPC)

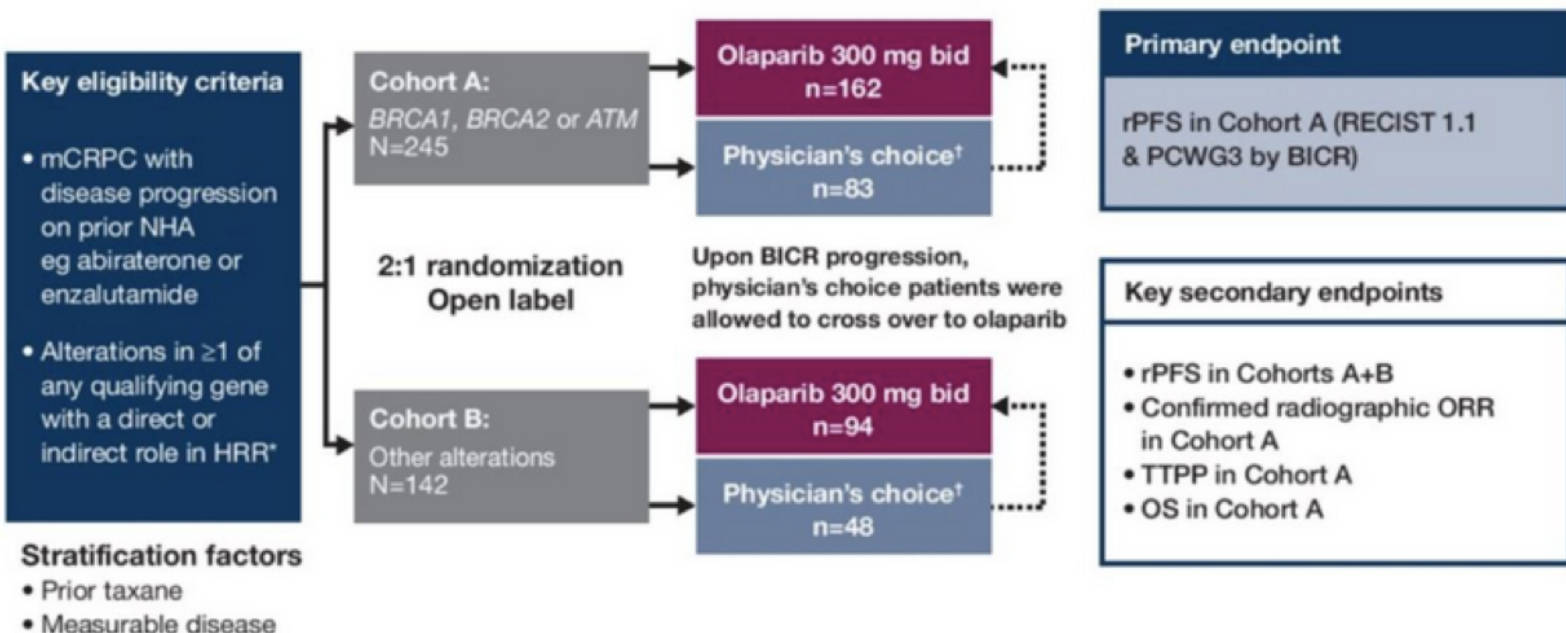
PARP as Therapeutic Targets



PARP 1 & 2 are the most studied therapeutic targets due to their involvement in DNA repair and its relevance to tumor formation.

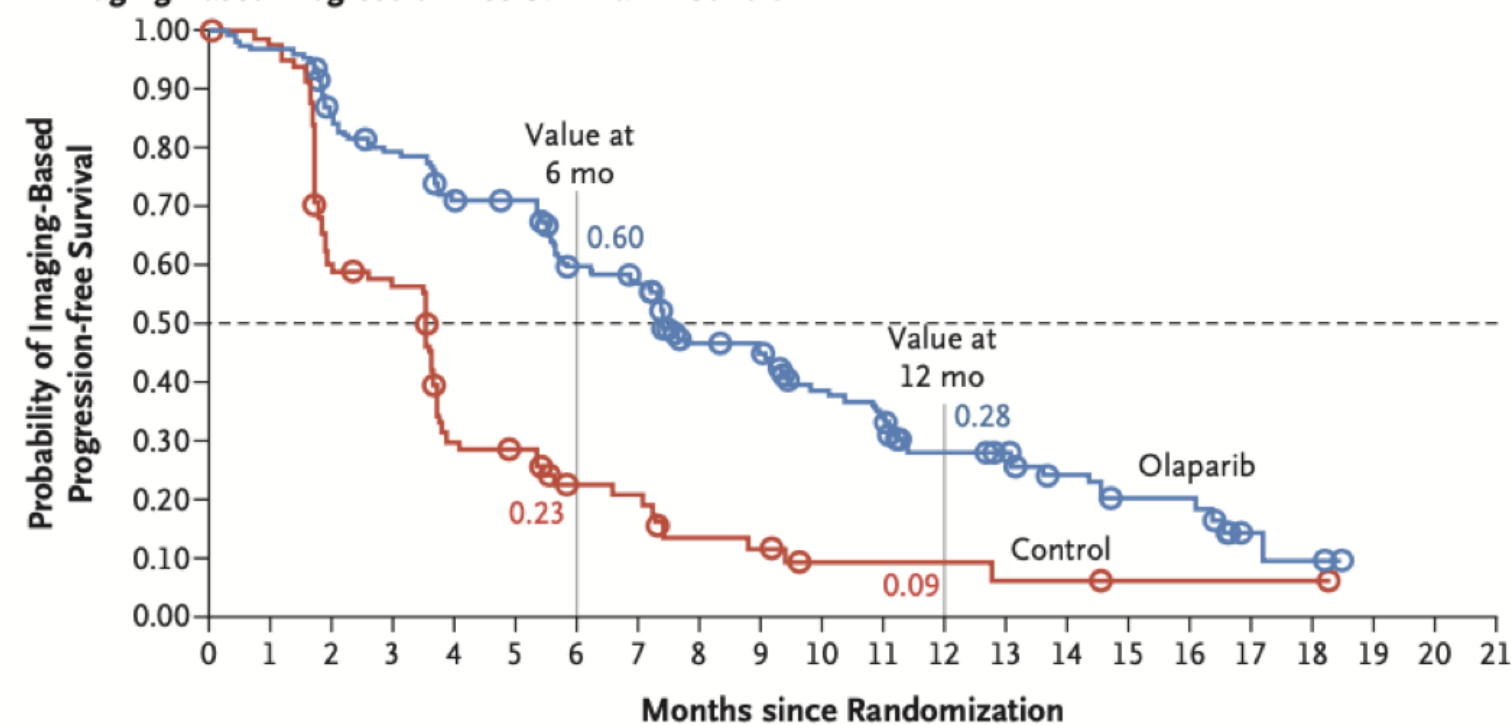


PROfound Trial: Study Design



PROfound Trial: Primary Endpoint

A Imaging-Based Progression-free Survival in Cohort A



PROFOUND TRIAL: Key Points

Olaparib provided statistically significant and clinically meaningful improvement in rPFS compared with physician's choice of abiraterone or enzalutamide.

Olaparib improved multiple clinical and patient-reported endpoints (rPFS, ORR, time to pain progression)

Olaparib was generally well tolerated with a safety profile generally consistent with that seen in other cancers

END RESULT



Approval of Olaparib for the treatment of metastatic castration-resistant prostate cancer in patients with deleterious alterations in homologous recombination repair genes in the USA and in patients with alterations in BRCA1 or BRCA2 in Europe.